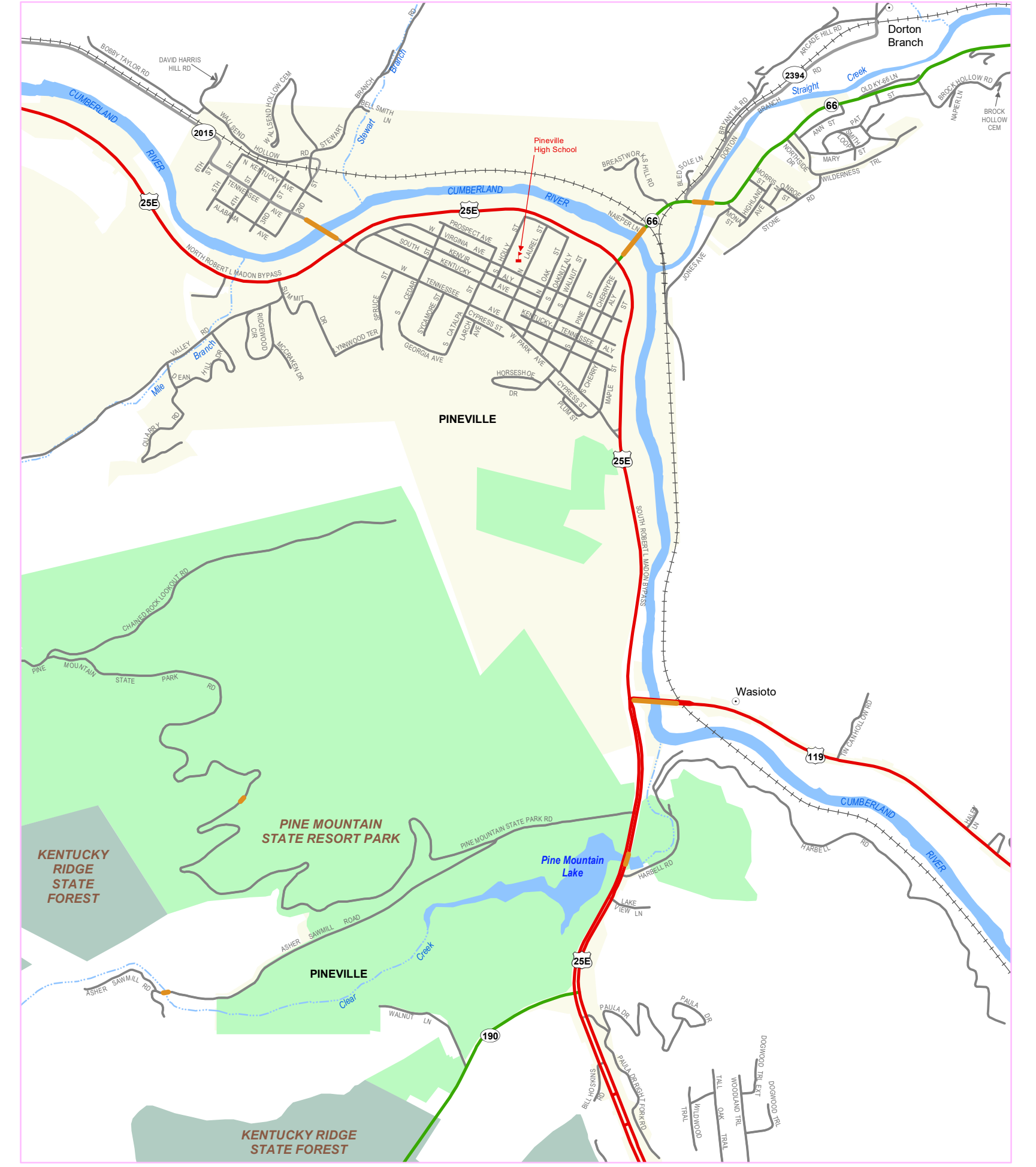
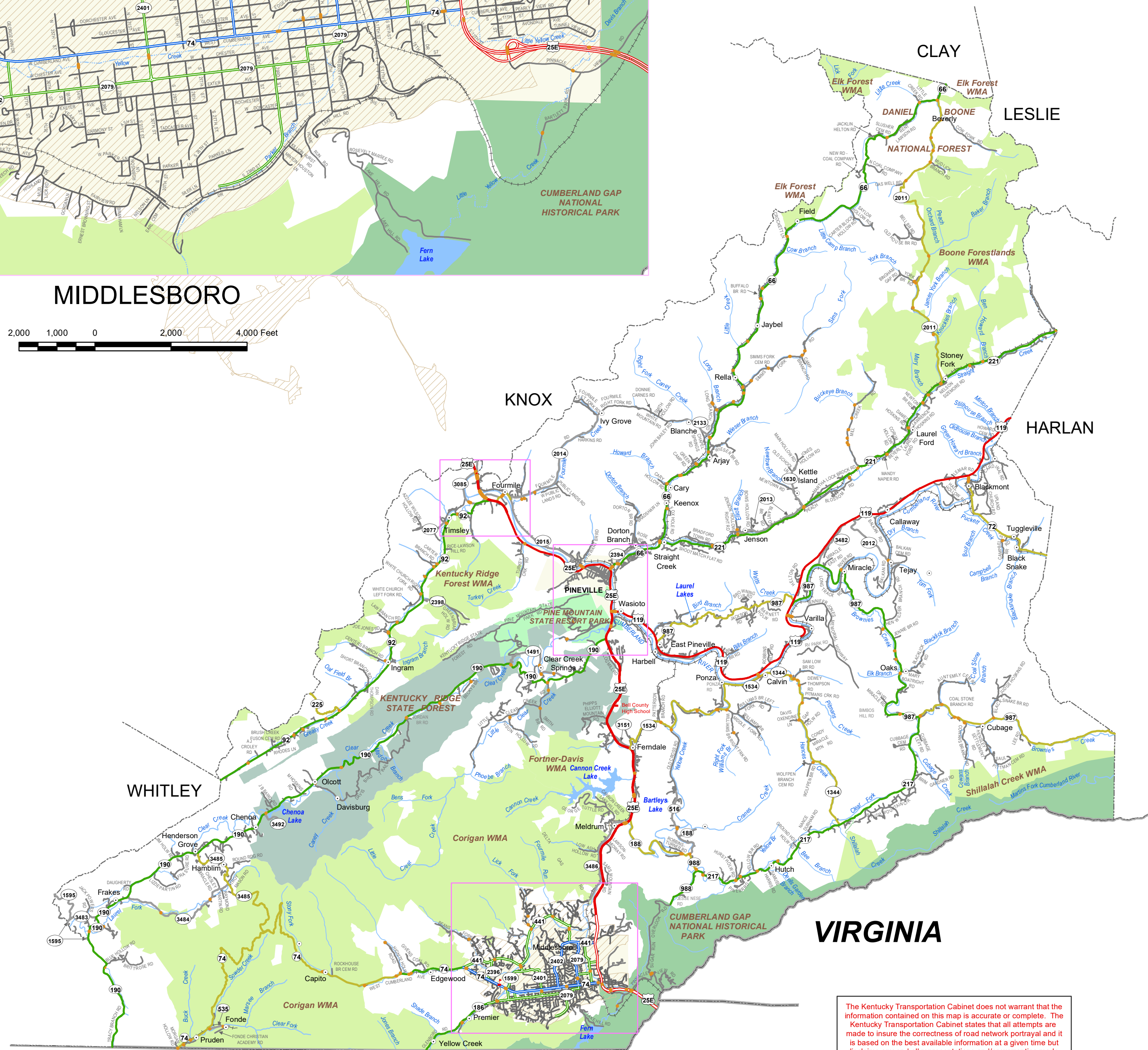
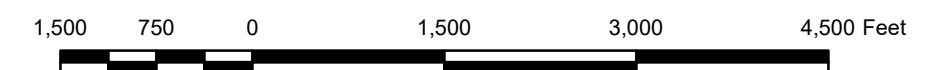


MIDDLESBORO



PINEVILLE

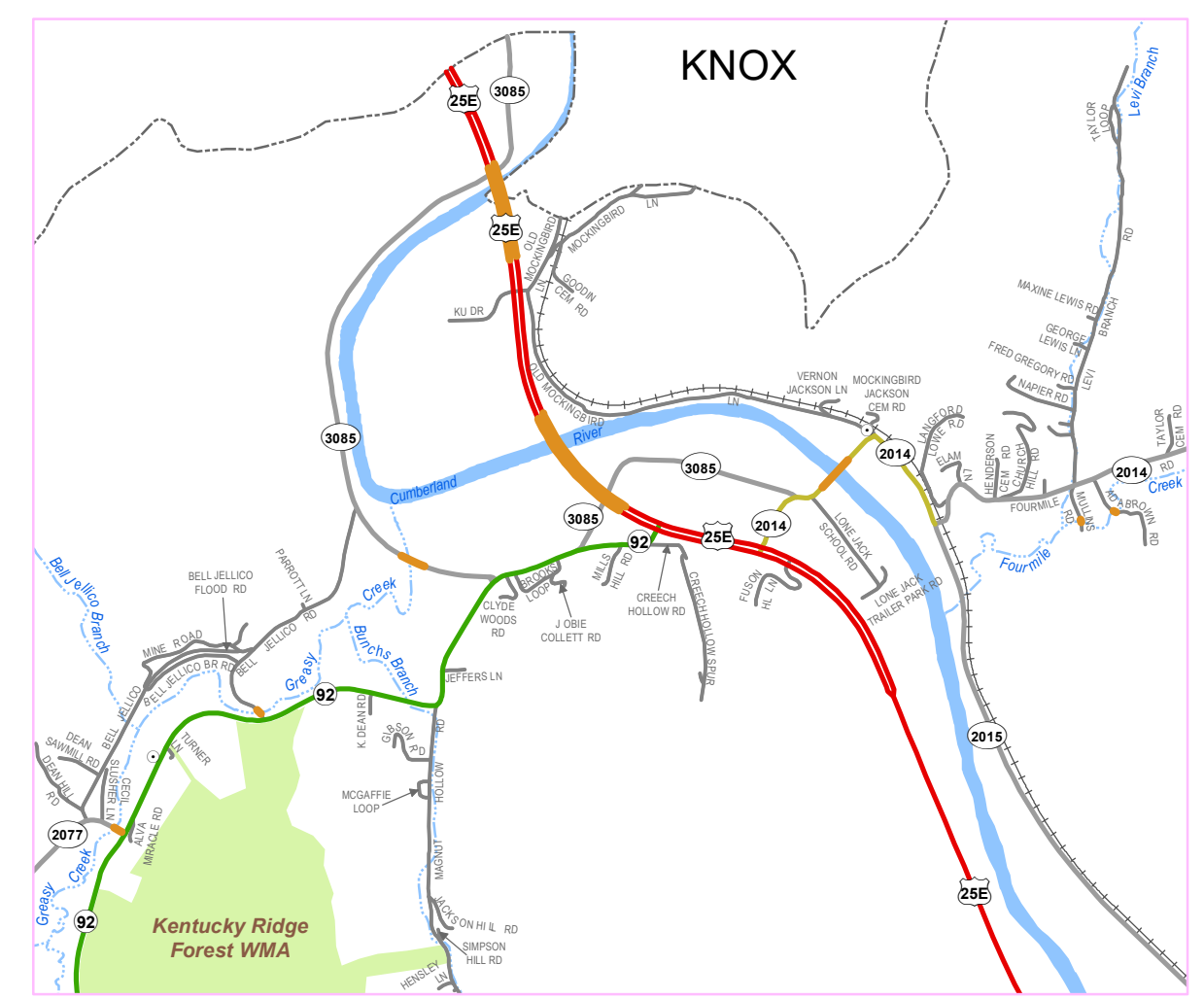


TENNESSEE

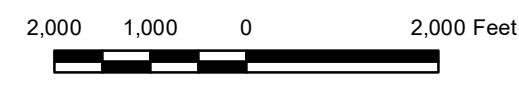
VIRGINIA

- Functional Classification**
- Interstate; Rural, Urban
 - Expressways; Rural, Urban
 - Principal Arterial; Rural, Urban
 - Minor Arterial; Rural, Urban
 - Major Collector; Rural, Urban
 - Minor Collector; Rural, Urban
 - Local; Rural, Urban
 - Local; Paved, Unimproved
 - Bridge
 - Railroad
 - Stream
 - City/Town
 - ✈ Airport
 - ⊕ Federal Aid Urbanized Area 2010
 - ⬜ Incorporated Area
 - 🌊 Lake
 - 🌳 State Park
 - 🌳 National Park or Recreation Area
 - 🌳 Defense Facility
 - 🌳 Wildlife Area
 - 🌳 Geological Area
 - 🌳 State, National, or Private Forest

The Kentucky Transportation Cabinet does not warrant that the information contained on this map is accurate or complete. The Kentucky Transportation Cabinet states that all attempts are made to insure the correctness of road network portrayal and it is based on the best available information at a given time but disclaims any and all representations and/or warranties made with respect to this map by any contributing source as to its contents, whether expressed, implied, or statutory, including, but not limited to, warranties of title, merchantability, and fitness for a particular purpose. Incorporated area boundaries are based on KRS 81A.470 filings recorded in the Kentucky Secretary of State's Office.



FOURMILE



TEAM KENTUCKY®

TRANSPORTATION CABINET

Functional Classification BELL COUNTY



Last map revision: NOVEMBER 2024
 Road centerlines collected using GPS technology
 Kentucky State Plane Coordinate System (NAD83)
transportation.ky.gov/planning

